

# Automatic Door Systems



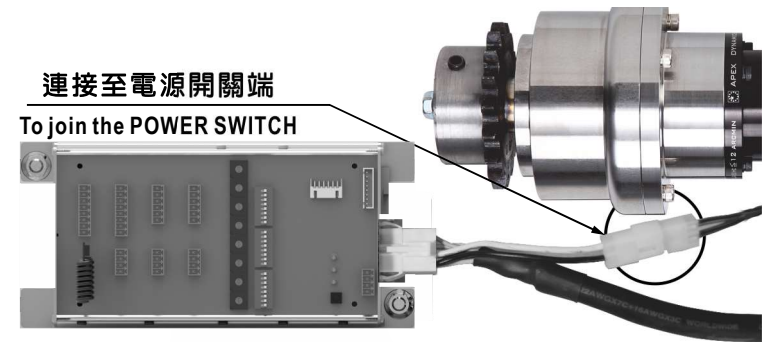
**IW-15**  
Swing Door

**使用說明**

**OPERATION INSTRUCTION**



<http://www.kth-automaticdoor.com/>  
e-mail : [kth@kthtw.com](mailto:kth@kthtw.com)



控制器與馬達連接示意圖  
The ILLUSTRATED of CONTROLLER and MOTOR.

## 警告

請確認感應器所標示之電壓是否與供給電源相同，若與供給電源電壓不同時，則感應器需另行加裝變壓裝置否則感應器極易燒毀，連接完畢後，請再確認一次。

## Warning

Please confirm WHETHER the SENSOR VOLTAGE is the same as the power supply. If different between them, need to add the TRANSFORMER, otherwise the SENSOR would be burned.



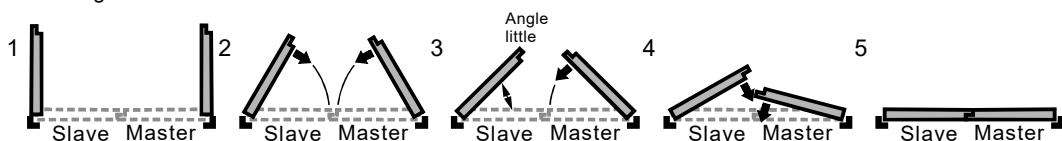
指撥開關 I  
DIP Switch I

副機關門停留角度 SLAVE postpone angle range

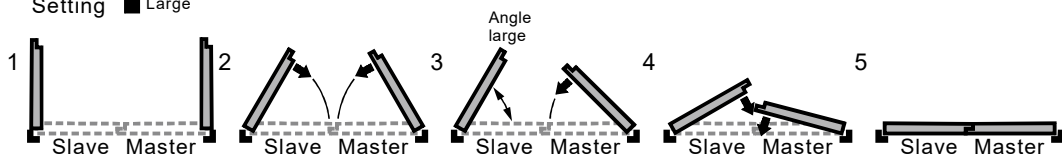
當主副機執行開門動作時，可設定副機停留的角度大小，以避免主副機之門扇產生碰撞問題。

When MASTER door is closing in order to avoid the SLAVE door hit it, installer can set the range to postpone the position to SLAVE.

開關設定 小  
Setting Little

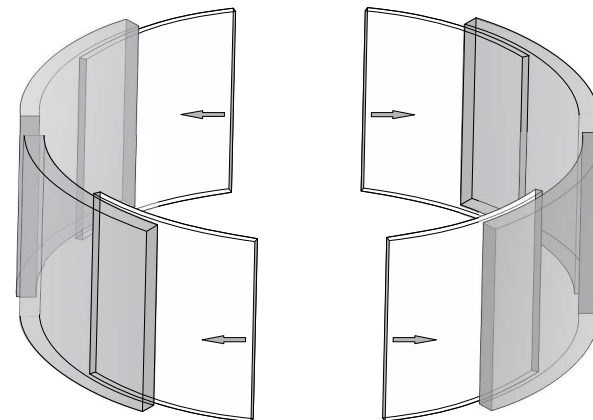


開關設定 大  
Setting Large



本公司另有以下各類自動門配備，請洽本公司各經銷商  
Our company has the following series of automatic door, please contact with our distributors/representations.

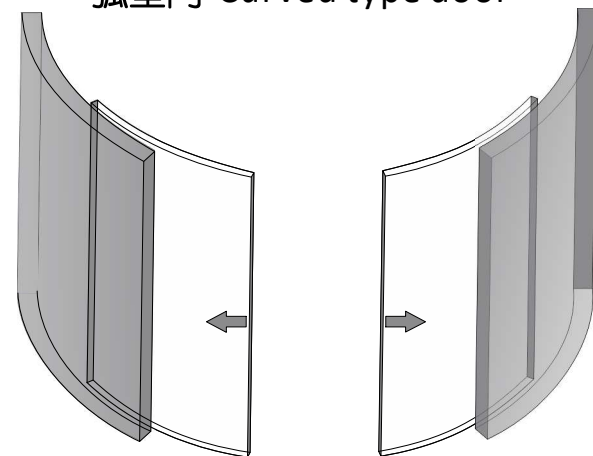
圓型門 Round type door



按裝方式請參考圓型門按裝說明

Installation: Please in accordance with the instruction of Round Type Door.

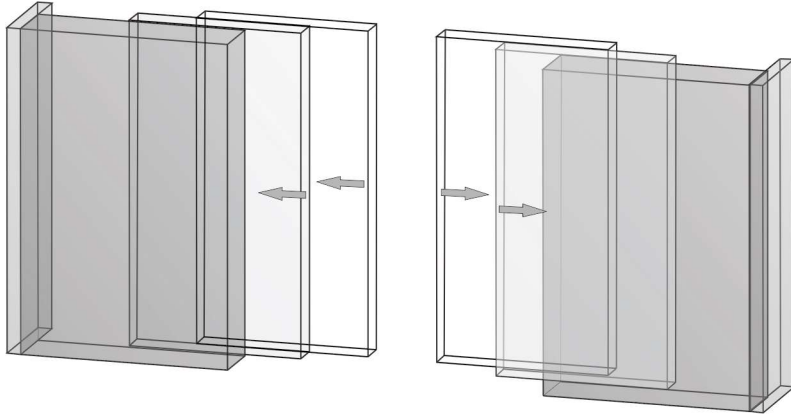
弧型門 Curved type door



按裝方式請參考弧型門按裝說明

Installation: Please in accordance with the instruction of Curved Type Door.

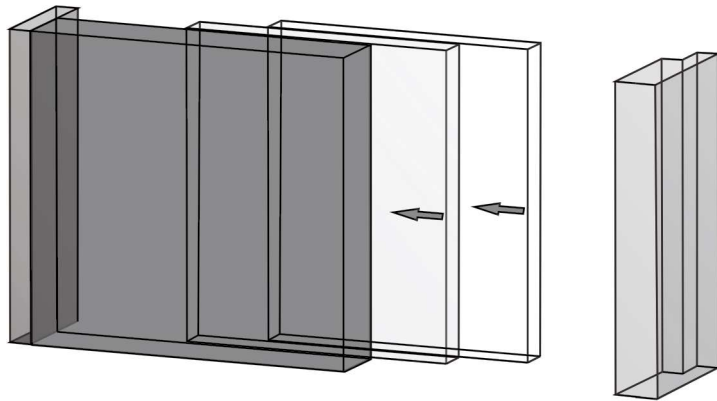
四扇走雙向門  
Telescopic 4-winged Sliding Doors.



按裝方式請參考四扇走雙向門按裝說明

Installation: Please in accordance with the instruction of Telescopic 4-winged Sliding Doors.

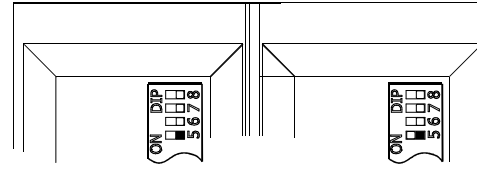
雙扇走單向門  
Telescopic 2-winged Sliding Doors.



按裝方式請參考雙扇走單向門按裝說明

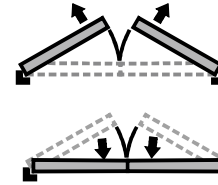
Installation: Please in accordance with the instruction of Telescopic 2-winged Sliding Doors.

A. 雙門示意圖 Double Door

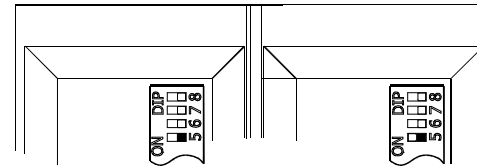


請設定二台主機指撥開關 I 第5號的狀態皆為0ff。

Please set all door DIP Switch I No.5 Off.

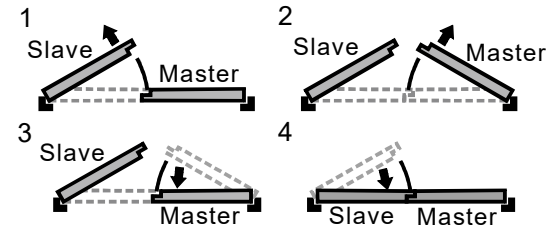


B. 主從雙門示意圖 Double Door M/S

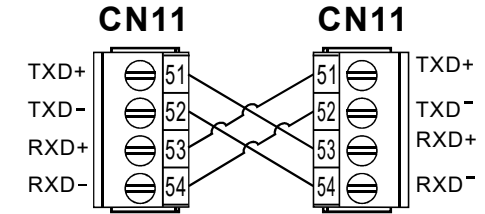


先執行關門的為主機，其指撥開關 I 的第 5 格設為 OFF。後關門的為副機，其指撥開關 I 的第 5 格設為 ON。

Please set the door which closes first to master (DIP Switch I → No.5 OFF), then set the second to close to slave (DIP Switch I → No.5 ON)

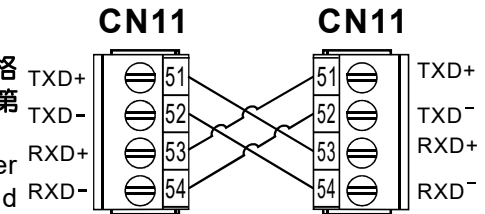


端子連接方式  
Connection



在連接端子後若黃色LED出現閃爍的狀態，表示連接成功，門扇即同步開啟與關閉。  
After connecting to terminals, yellow LED flashes to indicate connecting properly. The door leaves will open and close at the same time.

端子連接方式  
Connection



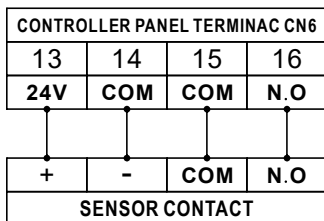
副機 Slave      主機 Master

在連接端子後若黃色 LED出現閃爍的狀態，表示連接成功。  
After connecting to terminals, yellow LED flashes to indicate connecting properly.

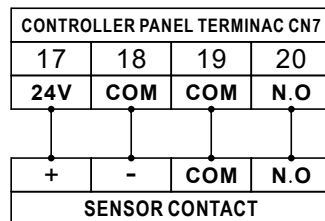
※在送電前請檢查門片的相關位置是否正確，以免開機測試時發生錯誤。主機與副機請同時送電，以避免開機的時間差造成開機測試錯誤。

※Before turn on the power, please inspect the relative positions of the door leaves to avoid error occurs. Please turn on "Master" and "Slaver" at the same time to avoid the time different causes the error.

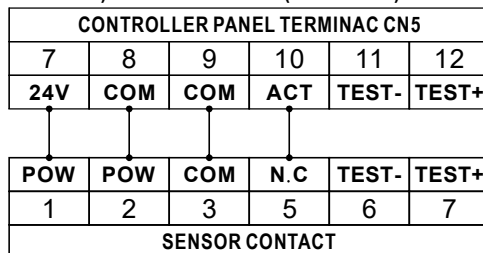
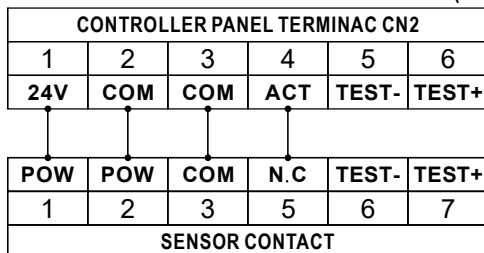
**ENTRY SENSOR  
ACTIVATION**



**EXIT SENSOR  
ACTIVATION**



**PREMIER SWING ONDOOR SAFETY (NOT MONITORED) - HOTRON SSS-5(EXAMPLE)**



**OPEN FACE SAFETY  
(TOPSCAN)**

CONTROLLER PANEL  
DIP Switch II No.1 → "ON"

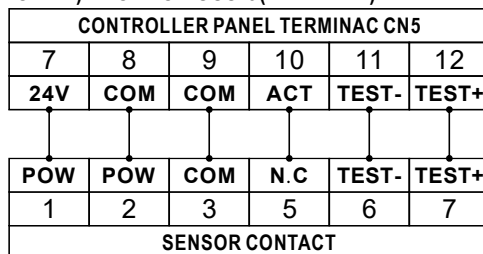
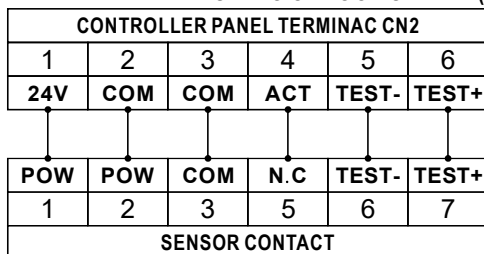
HOTRON SSS-5 SETTING  
DIP Switch No.1 → "B"  
No.3 → "N.C"

**CLOSE FACE SAFETY  
(TOPSCAN)**

CONTROLLER PANEL  
DIP Switch II No.4 → "ON"

HOTRON SSS-5 SETTING  
DIP Switch No.1 → "B"  
No.3 → "N.C"

**PREMIER SWING ONDOOR SAFETY (MONITORED) - HOTRON SSS-5(EXAMPLE)**



**OPEN FACE SAFETY  
(TOPSCAN)**

CONTROLLER PANEL  
DIP Switch II No.1 → "ON"  
No.2 → "ON"

HOTRON SSS-5 SETTING  
DIP Switch No.1 → "A"  
No.3 → "N.C"

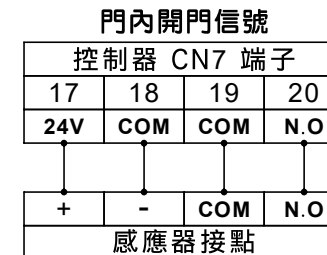
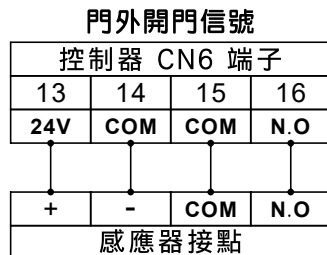
**CLOSE FACE SAFETY  
(TOPSCAN)**

CONTROLLER PANEL  
DIP Switch II No.4 → "ON"  
No.5 → "ON"

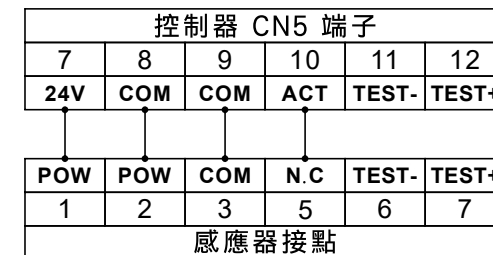
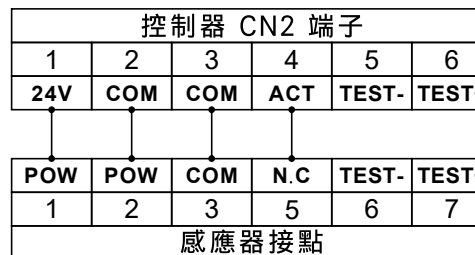
HOTRON SSS-5 SETTING  
DIP Switch No.1 → "A"  
No.3 → "N.C"

1. 產品規格  
TECHNICAL SPECIFICATION.....P1
2. 門機組各部件說明  
DESCRIPTION OF OPERATOR.....P2
3. 門機組尺寸圖  
OPERATOR (SECTION).....P3
4. 開門幅度設定說明  
DISTANCE SETTING..... P4
5. 各旋鈕功能說明  
ADJUST BOARD INSTRUCTION.....P5
6. 動作與電鎖信號連接說明  
CONNECTION - ACTIVATION AND LOCKS .....P9
7. 安全信號連接說明  
CONNECTION - SAFETY.....P10
8. 雙門/主從關係  
DOUBLE DOOR AND MASTER/SLAVE FUNCTION.....P12
9. 電器連接  
CONNECTION.....P14

<b>型號 MODEL</b>	<b>IW-15</b>
<b>門扇重量/寬度</b> DOOR WEIGHT & WIDTH	<p>最大值 : ● Max.</p>
<b>馬達</b> MOTOR	<b>DC24V 180W 直流無刷馬達</b> DC24V 180W BRUSHLESS DC MOTOR
<b>控制器</b> CONTROL	<b>微電腦化處理機控制器</b> STANDARD MICRO-CONTROLLER
<b>消耗電量</b> POWER CONSUMPTION	<b>180W</b>
<b>電源電壓</b> VOTAGE	<b>AC100V~240V</b>
<b>環境溫度</b> ENVIRONMENTAL TEMPERATURE	<b>-20°C ~ +50°C</b>
<b>噪音量</b> VOLUME	<b>最大 55 分貝</b> 55 decibel(max.)
<b>開啟速度</b> SPEED of OPENING 90 DEGREE	<b>最大值 : 3 秒 ~ 15 秒 / 90°</b> 3~15 sec. (Max)
<b>開啟時間</b> STARTING TIME	<b>可調 0 秒至 20 秒</b> 0~20 sec. (Regulable)
<b>開門幅度</b> OPENING DOOR RANGE	<b>依門擋位置而定</b> DEPENDS ON STOPPERS POSITION
<b>PFC 功率因素</b> POWER EFFICIENCY	<b>0.95(AC100V全載時)</b> 0.95 (In full load)



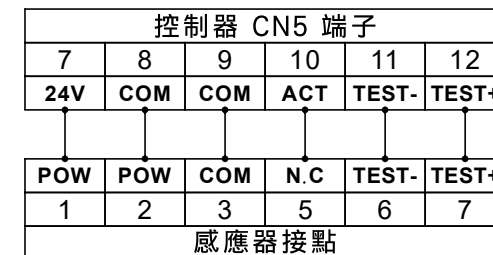
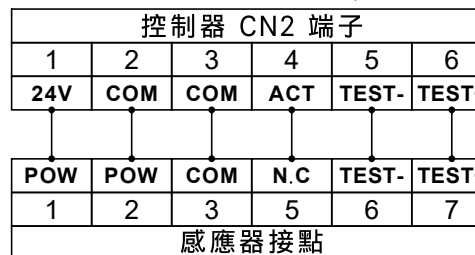
門上安全光線 (無自我偵測) - HOTRON SSS-5 為例



**開門面安全光線**  
 控制器指撥開關設定  
 DIP Switch II No.1 → "ON"  
 HOTRON SSS-5 設定  
 DIP Switch No.1 → "B"  
 No.3 → "N.C"

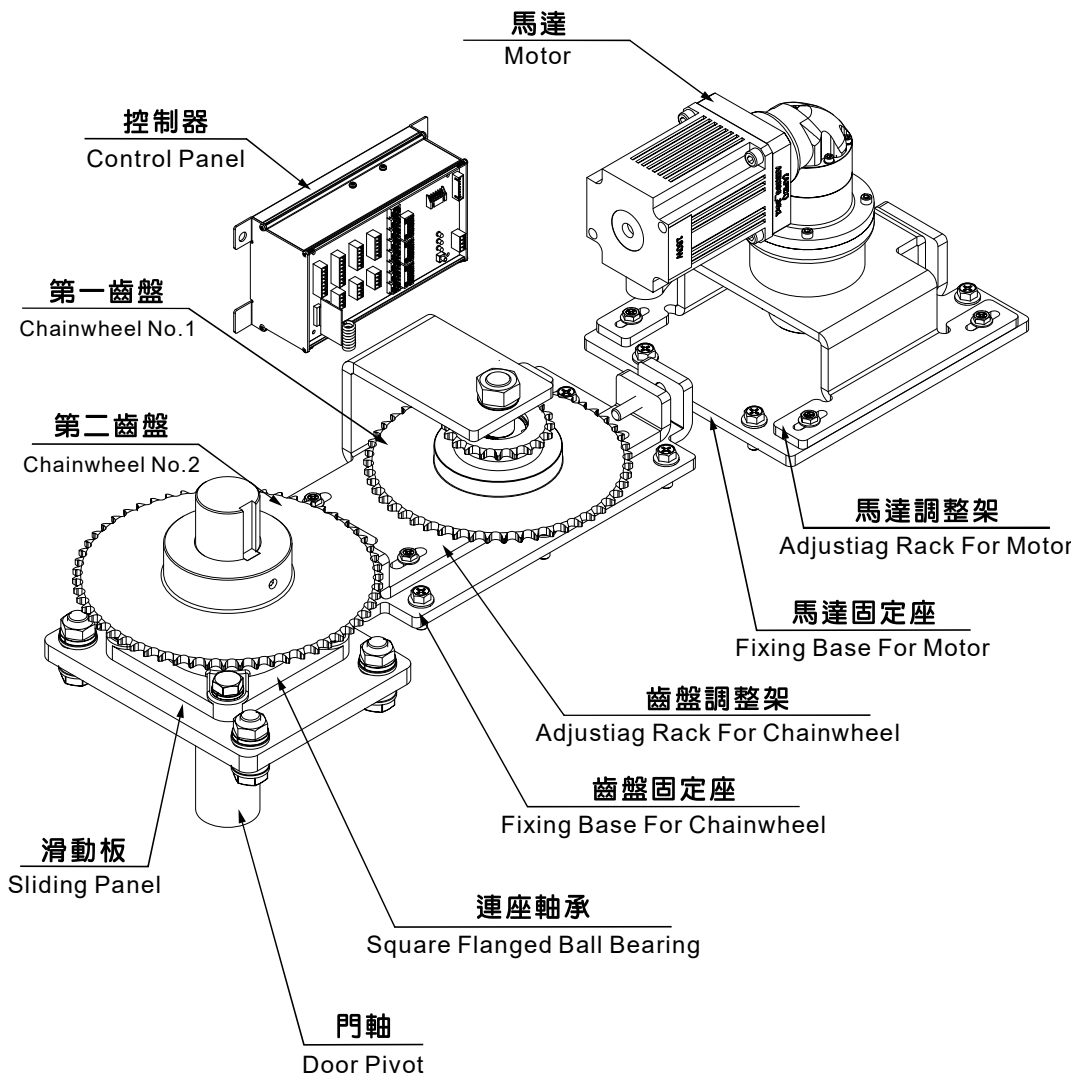
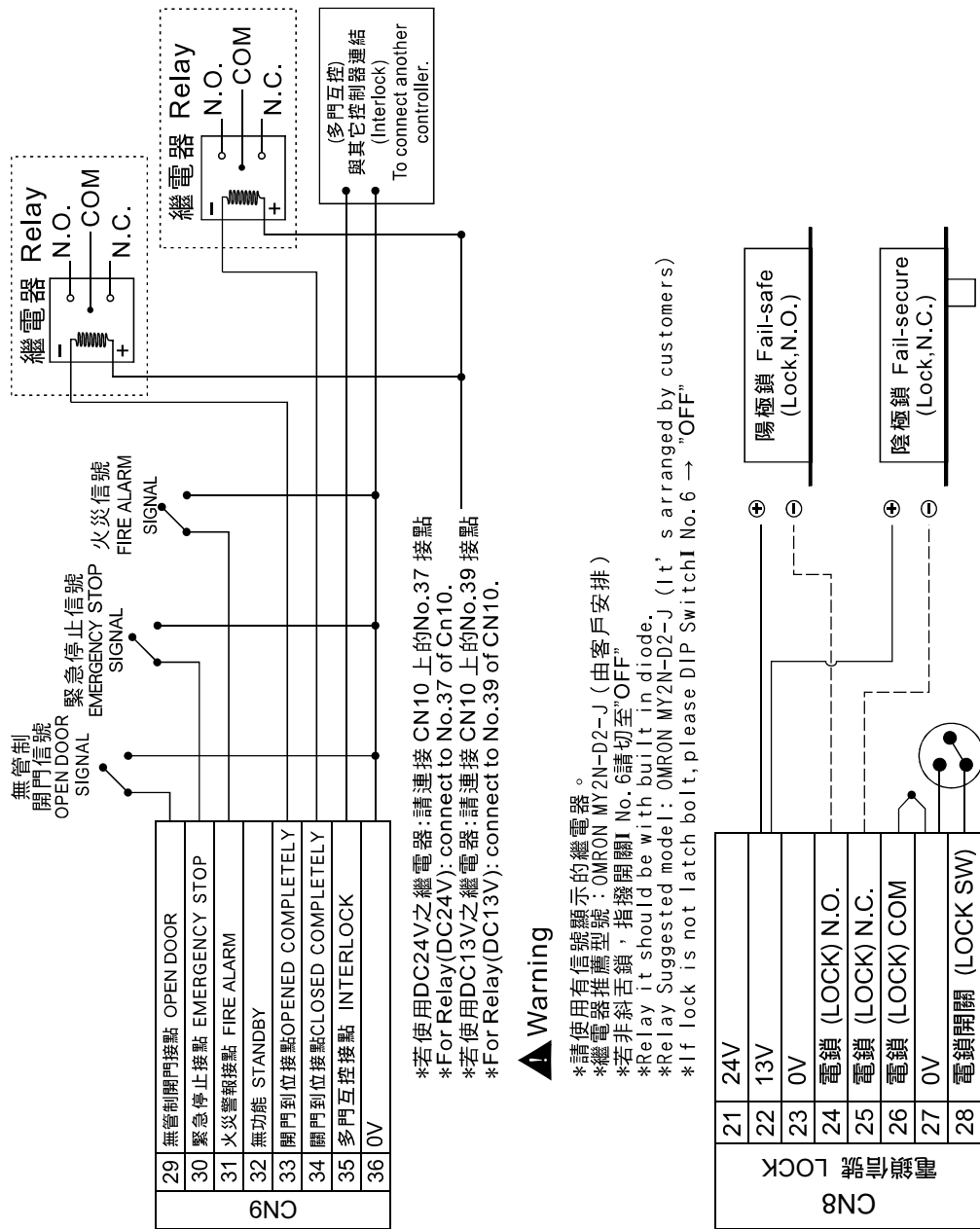
**關門面安全光線**  
 控制器指撥開關設定  
 DIP Switch II No.4 → "ON"  
 HOTRON SSS-5 設定  
 DIP Switch No.1 → "B"  
 No.3 → "N.C"

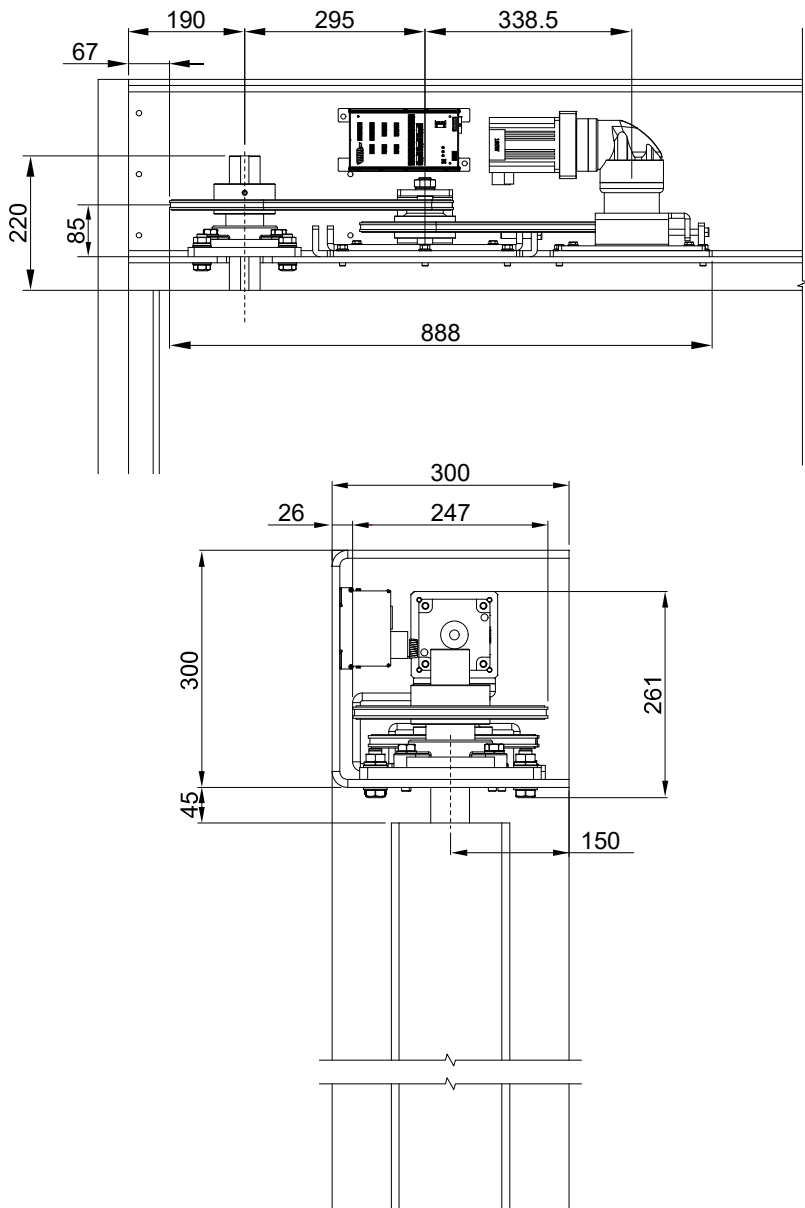
門上安全光線 (有自我偵測) - HOTRON SSS-5 為例



**開門面安全光線**  
 控制器指撥開關設定  
 DIP Switch II No.1 → "ON"  
 No.2 → "ON"  
 HOTRON SSS-5 設定  
 DIP Switch No.1 → "A"  
 No.3 → "N.C"

**關門面安全光線**  
 控制器指撥開關設定  
 DIP Switch II No.4 → "ON"  
 No.5 → "ON"  
 HOTRON SSS-5 設定  
 DIP Switch No.1 → "A"  
 No.3 → "N.C"





指撥開關 II  
DIP Switch II

PS:指撥開關有切換時要重新啟動電源  
When change the function of Dip switch, needs to RE-Power ON.

- 1 門後開關  
 N.O  N.C
- 2 門後開關自我測試  
 No  Yes
- 3 門後開關動作模式  
 停止  慢速
- 4 安全光線  
 N.O  N.C
- 5 安全光線自我測試  
 No  Yes
- 6 門外感應器  
 N.O  N.C
- 7 門內感應器  
 N.O  N.C
- 8 緊急停止  
 N.O  N.C

- 1 Open Face Safety  
 N.O  N.C
- 2 Open Face Safety Test  
 No  Yes
- 3 Open Face Safety Type  
 Stop  Slowly
- 4 Closing Face Safety  
 N.O  N.C
- 5 Closing Face Safety Test  
 No  Yes
- 6 Entry Sensor  
 N.O  N.C
- 7 Exit Sensor  
 N.O  N.C
- 8 Emergency stop  
 N.O  N.C



指撥開關 III  
DIP Switch III

- 1 無管制開門  N.O  N.C
- 2 火災警報  
 N.O  N.C
- 3 火災動作  
 N.O  N.C
- 4 開門防風壓  
 關閉  開啟
- 5 關門防風壓  
 關閉  開啟

6 ~ 8 保留

- 1 Open  N.O  N.C
- 2 Fire Alarm  
 N.O  N.C
- 3 Fire Alarm Type  
 N.O  N.C
- 4 Wind Pressure Resistance  
 OFF  ON (When Door Open)
- 5 Wind Pressure Resistance  
 OFF  ON (When Door Close)







指撥開關 I  
DIP Switch I

1 左/右開設定

右開  左開

2 煞車開關設定

有煞車  無煞車

3 副機關門停留角度

小  大

\*設定說明請參考第16頁

4 定向開關設定

OFF  ON

OFF: 正常模式

ON: 系統模式為按一下開門, 再按一下關門。

5 主/副機模式設定

主機  副機

6 電鎖模式設定

一般電鎖  斜舌式

7 門後長度失效偵測設定

手動  自動

Ps手動是由K8旋鈕設定  
自動是開機時自動偵測設定

8 反向開關設定

關閉  開啟

OFF(正常模式): 停電再復電後, 門扇先執行開門動作。

ON(適合保全系統): 停電再復電後, 門扇先執行關門動作。

PS:指撥開關有切換時要重新啟動電源

When change the function of Dip switch, needs to RE-Power ON.

1 L/R Switch

Right  Left

2 Brake power switch

OFF  ON

3 SLAVE postpone angle range

Little  Large

\*Please ref. to P16

4 Directional function

OFF  ON

OFF: Normal mode.

ON: Push once, open the door. Push again, close the door.

5 MASTER/SLAVE setting

Master  Slave

6 Electric lock type setting

Normal  Latch Bolt

7 "Non-detect angle" for safety sensor Setting.

Manual  Learn

"Manual setting" has to adjust by "K8" knob.

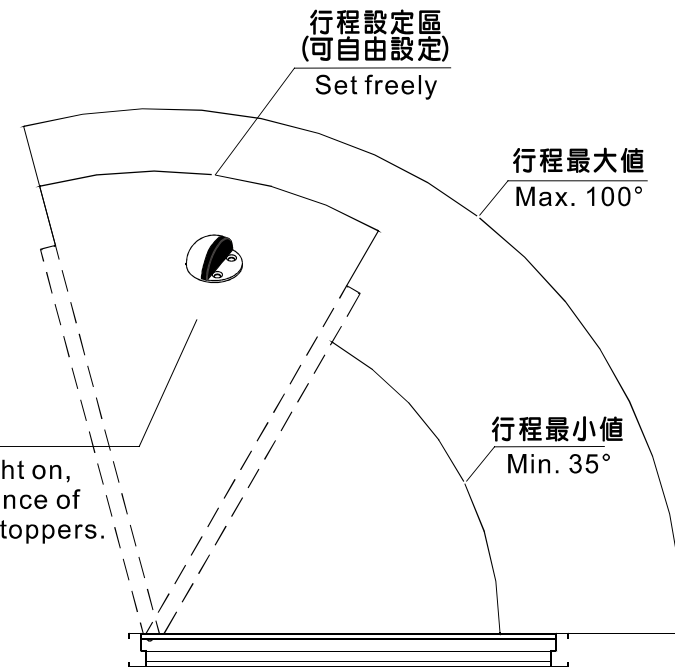
8 Reverse Switch:

in order to control opening and closing direction of the Door-Leaf after power resumes.

OFF  ON

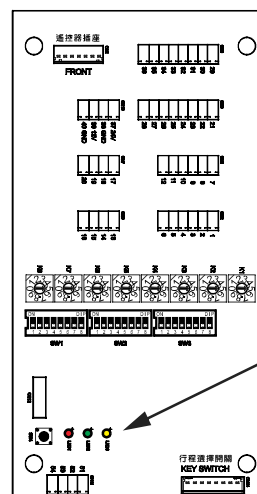
OFF: Normal mode, after power resumes, the Door-Leaf opens the door first.

ON: suitable for Security System, after power resumes the Door-Leaf closes the door first.



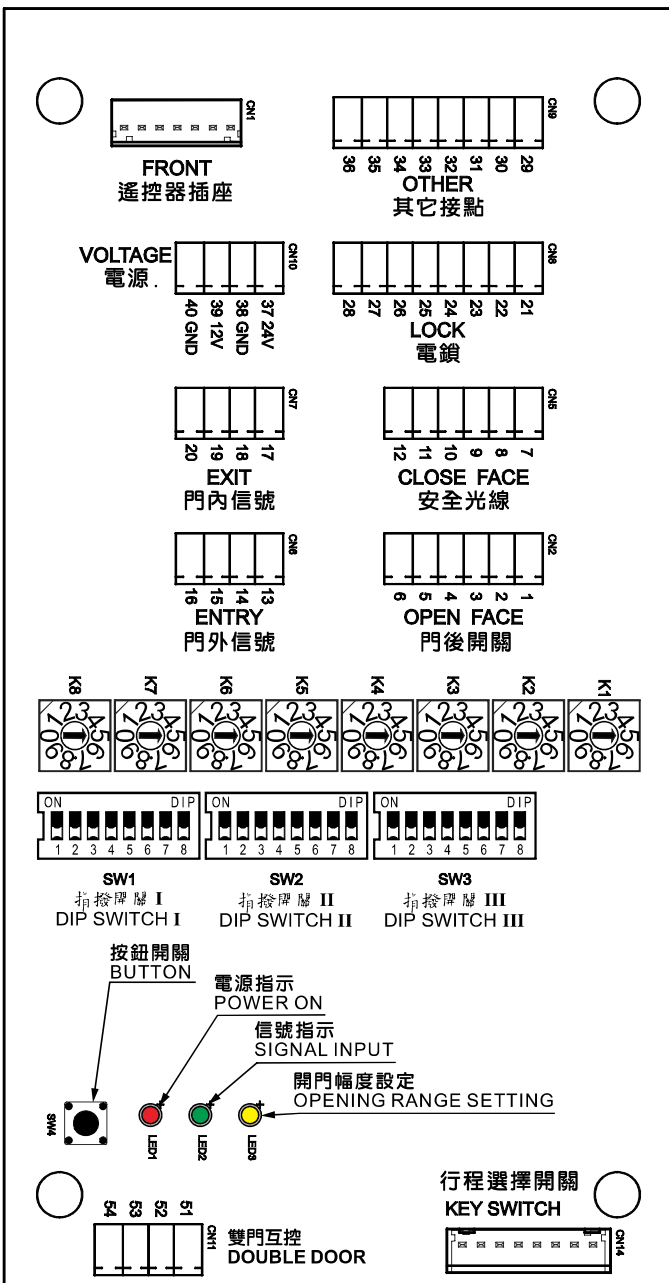
利用門擋器來設定  
開門行程

When the yellow light on, please set the distance of opening range By stoppers.



黃 LED 開機測試

Yellow LED Opening Testing



黃色 LED : 開門幅度設定  
(燈亮表示設定開門幅度中)

Yellow LED : Setting door opening range.(When light on you can set the door range.)

綠色 LED : 燈亮表示信號已輸入

Green LED : Signal input.

紅色 LED : 電源指示燈(燈亮表示電源已接通)

Red LED : Power on.

**K1 開門速度調節旋鈕 The opening speed of the door**

可調整門扇開啟時行進速度，數字越大，速度越快。初始調整時，請將數字由小而大，逐次調整。

Adjust the OPEN SPEED. Higher number, faster speed.

CAUTION: please adjust the number one by one from low to high.

**K2 關門速度調節旋鈕 The closing speed of the door**

可調整門扇關閉時行進速度，數字越大，速度越快。初始調整時，請將數字由小而大，逐次調整。

Adjust the CLOSED SPEED. Higher number, faster speed.

CAUTION: please adjust the number one by one from low to high.

**K3 開門慢速速度調節旋鈕 The slowing speed of opening door**

可調整門扇開啟時慢速速度，數字越大，力量愈大。初始調整時，請將數字由大而小，逐次調整。

Adjust the slow speed of opening door. Higher number, greater strength.

CAUTION: please adjust the number one by one from high to slow.

**K4 關門慢速速度調節旋鈕 The slowing speed of closing door**

可調整門扇關閉時慢速速度，數字越大，力量愈大。初始調整時，請將數字由大而小，逐次調整。

Adjust the slow speed of closing door. Higher number strength.

CAUTION: please adjust the number one by one from high to low.

**K5 開門時間調節旋鈕 Opening hold time**

調整門扇開放時間，數字越大，門扇停留時間越長，在最小(0)秒和最大(20)秒之間調整。

Adjust the HOLD OPEN TIME. Higher number, the hold time is longer.

NUMBER	0	1	2	3	4	5	6	7	8	9
SECOND	0	1	2	3	4	5	6	10	15	20

**K6 碰撞偵測靈敏度調節旋鈕 Sensitivity of Collision Detection**

可調整偵測門扇在運行中遇到阻礙時的反應靈敏度，數字越小靈敏度愈高。初始調整時，請將數字由小而大，逐次調整。

Adjust the sensitivity of reaction to obstacle during door is working, less number, higher sensitivity.

CAUTION: please adjust the number one by one from low to high.

**K7 煞車力調節旋鈕 Brake Power**

調整門扇的煞車力量，數字愈大煞車力愈強。

Adjust Door-Leaf BRAKE POWER. Higher number, more Brake power

**K8 門後防撞失效距離旋鈕 "Non-detect angle" for safety sensor**

數字	0	1	2	3	4	5	6	7	8	9
角度	Desable	4/90°	8/90°	12/90°	16/90°	20/90°	24/90°	28/90°	32/90°	36/90°